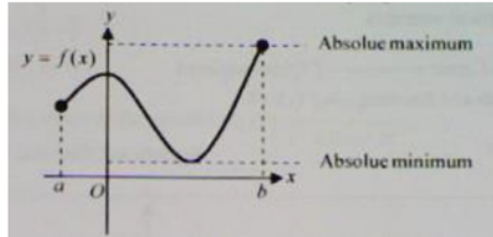


Extrema of a Function

A. Absolute Extrema: An absolute maximum is the highest y – value of a function on a given interval or across the entire domain. An absolute minimum is the lowest y – value of a function on a given interval or across the entire domain.



B. Relative Extrema

I. Relative Maximum: The y -value of a function where the graph of the function changes from increasing to decreasing. Another way to define a relative maximum is the y -value where derivative of a function changes from positive to negative.

II. Relative Minimum: The y -value of a function where the graph of the function changes from decreasing to increasing. Another way to define a relative minimum is the y -value where derivative of a function changes from negative to positive.

